



Forest Service Resources for Tribal Community Tourism Projects



Toby Bloom
National Program Manager- Travel, Tourism and Interpretation
Recreation, Heritage and Volunteer Resources
US Forest Service
tobybloom@fs.fed.us

Office of Tribal Relations




- ❑ Supporting Sovereignty through Shared Stewardship
- ❑ Create resilient ecosystems through on-the-ground, community-based projects.
- ❑ Collaborate in ways that build commitment to partnership and ownership of the results.
- ❑ Find common interests and leverage resources to get work done.



Santa Fe and Carson National Forests Sign First Ever Joint MOU with Ohkay Owengh Tribe
Posted August 1, 2019


By Rebekah Heston, Tribal Relations, Santa Fe National Forest

At a signing ceremony on May 13, the Santa Fe and Carson National Forests signed a joint Memorandum of Understanding with the Ohkay Owengh Tribe at the tribal council room. Forest Supervisor James Mokras and Carino Road District Ranger Sean Ferrell joined Governor Ron Lewis to sign the first ever JOE MOU within the Southwest Region. Staff from the Española District and Ohkay Owengh Livelihood Governor Albert Biese were on hand to participate in the historic signing event that has been several years in the making.



Ohkay Owengh Governor Ron Lewis, Carino Road District Ranger Sean Ferrell and Forest Supervisor James Mokras sign a joint MOU on May 13, 2019 at the tribal council chambers.

Labor of Love to Restore Watershed Takes Collaboration
Posted August 1, 2019



Tribe Crews working on restoring Panther Creek. Photo courtesy of Kelly Schaefer, USFS.

For two years, the Salmon-Challis National Forest staff worked with the Shoshone-Bannock Tribes to develop a watershed-based restoration plan from the headwaters to the mouth of Panther Creek, a tributary of the upper Salmon River in Idaho. The waters had become so polluted that the fish that Tribes in the area had relied on for generations were no longer available to sustain the Tribes.

www.fs.fed.us/spf/tribalrelations

USFS Heritage Program (Within RHVR)



- 430 archaeologists
- Most of our archaeologists are also tribal liaisons
- Database with over 410,000 known sites (some are confidential)
- All of our National Forests and Grasslands were once (are) Tribal lands
- Next Exit History App

*Local and regional Heritage Program leads are often the best contacts for engaging in tribal tourism/interpretation partnerships with FS



<https://www.youtube.com/watch?v=iPHvzz11KoM>

Current Project Examples



Living Archaeology Weekend
Daniel Boone National Forest,
Kentucky

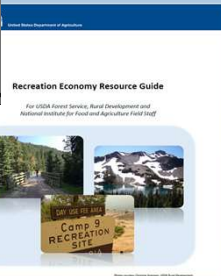
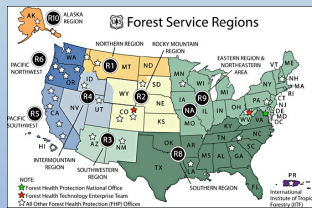
Chimney Rock National Monument
San Juan National Forest,
Colorado



The Middle Fork Native American Interpreter Program
Salmon-Challis National Forest,
Idaho

<https://www.youtube.com/watch?v=-pkL3vomfA>

Joint FS/RD/NIFA Initiative: Strengthening Recreation Economies in Gateway Communities



- Kickoff webinar in July 2016
- MOU signed in January 2017
- Playbook released in January 2017, currently revising Version 2, anticipated release is late summer 2019

The Playbook

- Empowers FS and RD field staff to seek out field-level partnerships and connections
- Inform FS staff about funding and TA resources in RD/NIFA that can support the recreation economy
- Encourage FS and RD staff to collaborate with Cooperative Extension System (Land Grant Universities) and identify appropriate NIFA grants

Examples of RD Programs Supporting Recreation and Tourism Projects



- ❑ **Technical Assistance Through Cooperative Agreements:** Stronger Economies Together, Local Food Local Places, Cool and Connected
- ❑ **Grant Programs:** Community Facilities, Water Environment Programs, Rural Business Development Grants, Rural Cooperative Development Grant, Rural Micro-entrepreneur Assistance Program, Community Connect
- ❑ **Loan and Loan Guarantee Programs:** Business and Industry Loan Guarantee, Community facilities Loan and Loan Guarantee, Water Infrastructure programs, Telecommunication Infrastructure Loans and Loan Guarantees, Intermediary Relending Program





Thank you!



Questions/Discussion

Toby Bloom tobylbloom@fs.fed.us 240-330-2260



PUBLIC LAND SUCCESS STORIES

CHOCTAW NATION OF OKLAHOMA



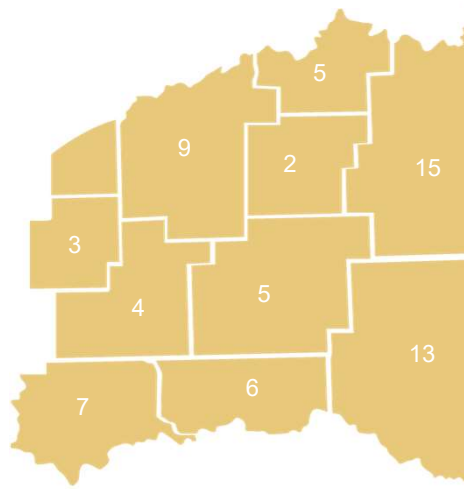
CHOCTAW COUNTRY OVERVIEW

Mission

To sustain and increase the economic benefits that tourism provides to the Choctaw Nation Region by positioning Choctaw Country as a preferred travel and getaway destination in Oklahoma.

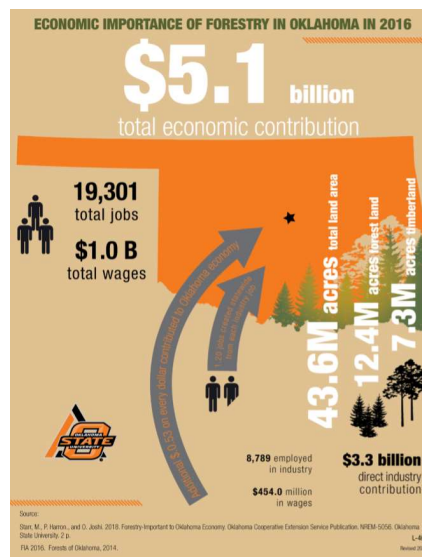
Vision

Choctaw Country will be a highly visited tourism destination that offers a diverse mix of culture, art, heritage, natural, outdoor, business and entertainment experiences.



OKLAHOMA FORESTRY OVERVIEW

- 12.4 Million Acres of Oklahoma are Forested (28% of OK Land)
- Forest Industry directly contributes over \$3.3 Billion annually to the state economy
- Total economic impact of \$5.1 Billion
- Supports 19,300 jobs
- Provides Scenic Beauty and Recreational Opportunities





PARTNERING WITH THE FOREST SERVICE

TOURISM

ECONOMIC
DEVELOPMENT &
INFRASTRUCTURE

GOVERNMENT
(PROMISE ZONE)

FORESTRY



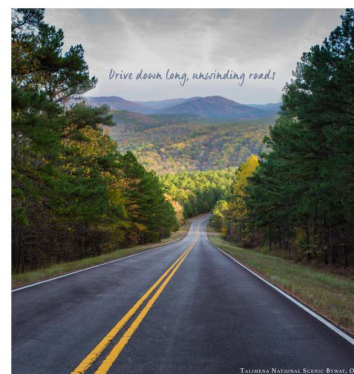
TOURISM & THE FOREST SERVICE

STATE

- Beavers Bend State Park
- Forest Heritage Center
- Masters at Work: Woodturning Competition & Exhibit
- Beaves Bend Folk Festival

FEDERAL

- Ouachita National Forest
- Talimena National Scenic Byway





TOURISM & THE FOREST SERVICE

PROMOTION OF ASSETS

- Social Media
- Website
- App/Widget
- Digital Media
- Print Media
- Tradeshows
- Bi-Annual Pathfinder Guide



Choctaw Nation Division of Commerce

Living out the Chohta Spirit FAITH • FAMILY • CULTURE



TOURISM & THE FOREST SERVICE

SPONSORSHIPS & SUPPORT

- Event Sponsorships
- Special Projects Support
- Consulting



Happy Up and Slow Down
CHOCTAWCOUNTRY.COM

Choctaw Nation Division of Commerce

Living out the Chohta Spirit FAITH • FAMILY • CULTURE



TOURISM & THE FOREST SERVICE

SITE DEVELOPMENT | FOREST HERITAGE CENTER

The Forest Heritage Center Museum is located in Beavers Bend State Park. Operated by the Forest Heritage Center Advisory Board and Oklahoma Forestry Services, the museum houses historical documents, antique forestry tools, wood art, homestead memorabilia, and a research library filled with books, periodicals, and other materials pertaining to forestry.



TOURISM & THE FOREST SERVICE

SITE DEVELOPMENT TALIMENA SCENIC BYWAY | OUACHITA NATIONAL FOREST

- Assisted in opening a visitor center in nearby Talihina
- Features Choctaw Cultural information





ECONOMIC DEVELOPMENT & INFRASTRUCTURE

PARTNER TO IMPROVE SURROUNDING AREAS

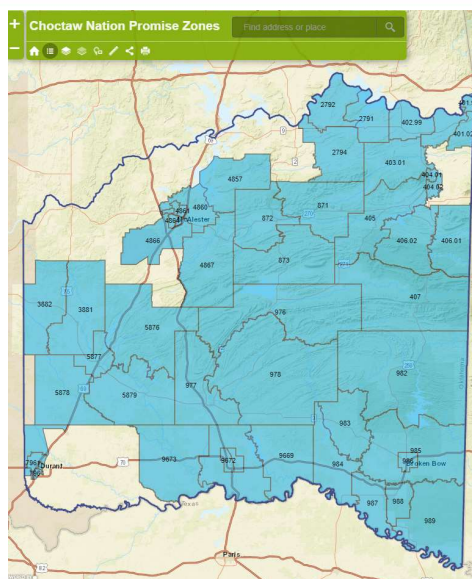
- Healthcare
- Road repair
- Connectivity
- Quality of Life
- Convenience



GOVERNMENT & PROMISE ZONE

NATIONAL AWARENESS

- First Tribal presidential Promise Zone Designation
- Spurred visits from Federal Dignitaries
 - USDA Under Secretary Blazer (US Forest Service and Natural Resources Conservation)
- To Bridge a Gap Conference
 - Partnered with National Forest Service





CHOCTAW NATION TRIBAL FORESTRY SERVICES DEPARTMENT

- Unique forestry wild land fire-fighting unit
- Stationed in Talihina, OK
- One of few departments that can be called out 24/7
- Responds to CN Forest incidents, OK Forest Incidents and nationwide incidents—specifically when on tribal land
- Are dispatched by the U.S. Forest Service to major forest fires throughout the U.S.



YAKOKE!

Erin McDaniel
Director of Tourism & Choctaw Store
emcdaniel@choctawnation.com